

Notice To Mariners

Lismore Point & Port Appin Hydrographic Survey 25.10.2022

Mariners are advised that hydrographic survey works will be conducted by Aspect Land & Hydrographic Surveys Ltd adjacent Lismore Point & approaches and Port Appin Pier & approaches.

The works are due to commence 25.10.2022 for a period of 1 to 2 days and comprise of fixed sensors being deployed from the survey vessel “Coastal Sensor II”. VHF radio watch on channels 12 & 16 will be monitored throughout the works.

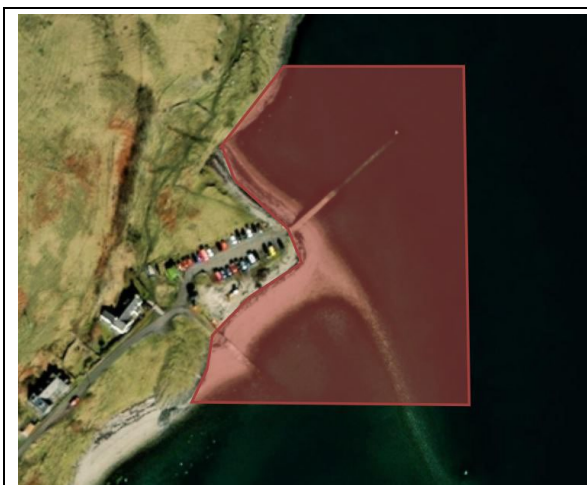


FIGURE 1 - SURVEY EXTENTS: LISMORE POINT, ARGYLL

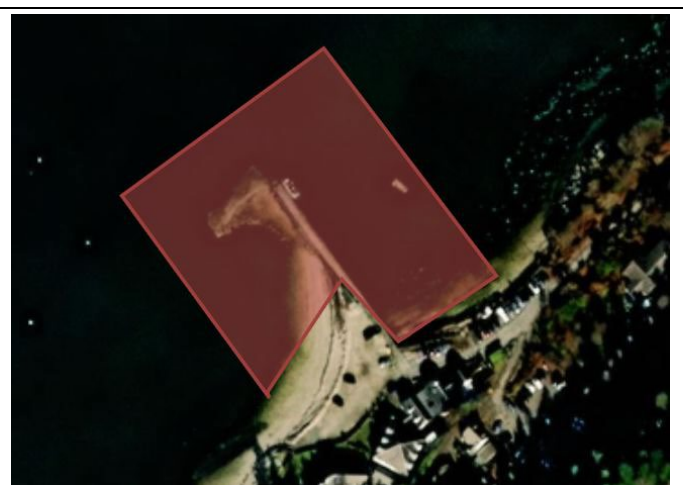


FIGURE 2 - SURVEY EXTENTS: PORT APPIN, ARGYLL

The vessel will be restricted in its ability to manoeuvre and will display the appropriate lights and shapes. Other vessels are requested to pass at a safe speed and provide a minimum clearance of 500m (COLREGs Rule 16 & 18) during marine operations.

Further information can be obtained from the Harbour Master on 01631 562892, VHF ch12.

Vicki McKenzie
Harbour Master
Oban
PA34 5QD